



**FEDERAL
CUSTOMS
SERVICE**

DESTRUCTION OF THE RUSSIAN CUSTOMS INFRASTRUCTURE BY THE UKRAINIAN ARMY

TETKINO Border-crossing Point

23.04.2022/05.06.2022



KRUPETS Border-crossing Point

29.04.2022/15.06.2022



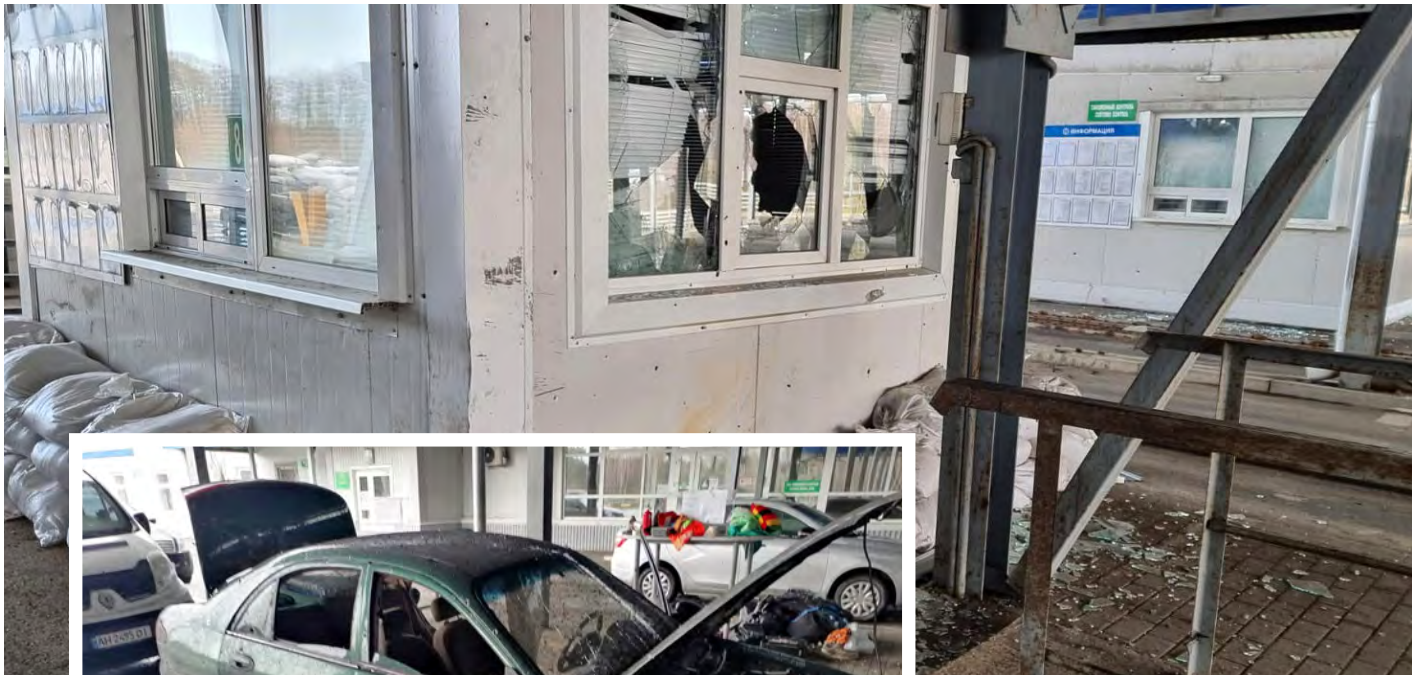
LOMAKOVKA Border-crossing Point

08.06.2022/12-13.06.2022



NOVYE YURKOVICHI Border-crossing Point

10.06.2022



LINES FOR DEPARTURE FROM THE RUSSIAN FEDERATION TO THE LATVIAN AND ESTONIAN REPUBLICS

18.06.2022



KUNICHINA GORA International Automobile Border-crossing Point (Border with Estonia)

Line – 120 vehicles.

Processing rate of vehicles departing from the Russian Federation to the Republic of Estonia is 4 vehicles per hour.



SHUMILKINO International Automobile Border-crossing Point (Border with Estonia)

Line – 310 vehicles.

Processing rate of vehicles departing from the Russian Federation to the Republic of Estonia is 4 vehicles per hour.



BURACHKI International Automobile Border-crossing Point (Border with Latvia)

Line – 80 vehicles.

Processing rate of vehicles departing from the Russian Federation to the Republic of Latvia is 4-6 vehicles per hour.



UBYLINKA International Automobile Border-crossing Point (Border with Latvia)

Line – 300 vehicles.

Processing rate of vehicles departing from the Russian Federation to the Republic of Latvia is 4-5 vehicles per hour.



